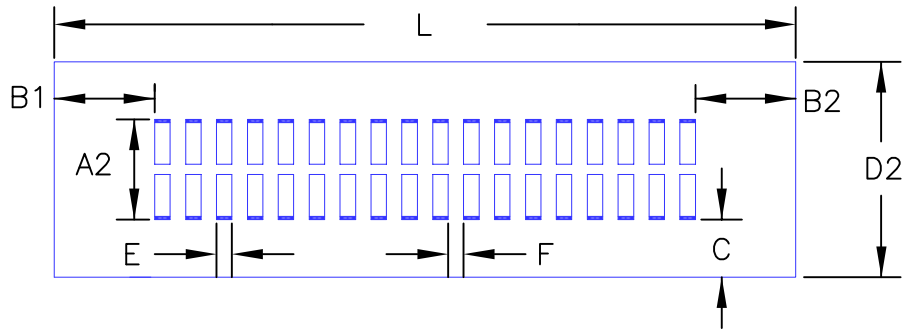
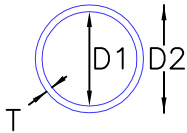


Inline Pipe Grate Component - Schedule 40 PVC  
8" Nominal Pipe Size w/ Center Support - Non Belled

Plan View

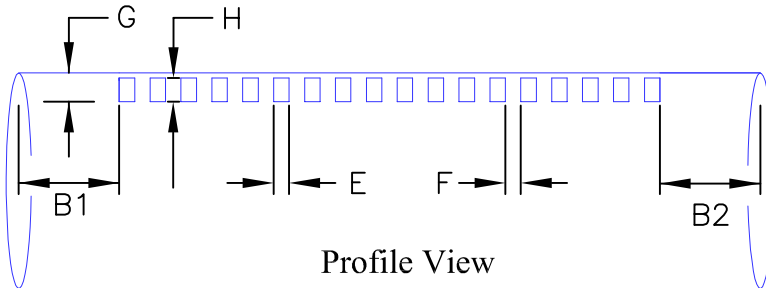


Typical  
Pipe  
Section



Pipe Size	A1	A2	B1	B2	C	D1	D2	E	F	G	H	R	T	Open Area Per Slit
8.00"	1.978"	5.50"	4.00"	***	1.562"	7.981"	8.625"	0.250"	0.312"	0.991"	0.670"	0.50"	0.312"	1.10 in <sup>2</sup>

Pipe Size listed is nominal pipe size.  
\*\*\* Required Min. = B1, Varies with Section Length.  
See Page 2 for Dimension Abbreviation Descriptions.



Profile View

Inline Pipe Grate Component - Schedule 40 PVC  
8" Nominal Pipe Size w/ Center Support - Non Belled

D1 = Nominal Inside Diameter per ASTM D1785  
D2 = Outside Diameter per ASTM D1785  
A1 = Provided Open Slit Length  
A2 = Total Length of Slit Cut  
B1 = Short End Clear Spacing = Min. required for SCH40 fittings  
B2 = Long End Clear Spacing  
C = Clear Spacing from OD to Edge of Slit Cut  
E = Slit Width  
F = Rib Width  
G = Depth to Bottom of Open Slit from top of pipe  
H = Slit Height  
T = Minimum Thickness per ASTM D1785

8"-CS IPGC		
(L) (FT)	# Slits	Open Area (SF)
-	-	--
1.0	14	0.048
1.5	36	0.124
2.0	58	0.199
2.5	78	0.268
3.0	100	0.343
3.33	114	0.391
3.5	122	0.419
4.0	142	0.488
4.5	164	0.563
5.0	186	0.639
5.5	206	0.707
6.0	228	0.783
6.5	250	0.859
6.67	256	0.879
7.0	270	0.927
7.5	292	1.003
8.0	314	1.078
8.5	334	1.147
9.0	356	1.223
9.5	378	1.298
10.0	398	1.367
10.5	420	1.442
11.0	442	1.518
11.5	462	1.587
12.0	484	1.662
12.5	506	1.738
13.0	526	1.806
13.33	542	1.861
13.5	548	1.882
14.0	570	1.957
14.5	590	2.026
15.0	612	2.102
15.5	634	2.177
16.0	654	2.246
16.5	676	2.321
16.67	684	2.349
17.0	698	2.397
17.5	718	2.466
18.0	740	2.541
18.5	762	2.617
19.0	784	2.692
19.5	804	2.761
20.0	826	2.837

\* The open slit areas shown in the table assume a standard fitting is attached on each end of the pipe section. Thus, some of the listed length (L) is considered unavailable for providing open slits.

For an internal one-foot section of 8"-CS IPGC, beginning at the edge of an open slit:

Number of Open Slits = 42 (21 open slits X 2 sides)  
Slit Open Width = 0.25 inches  
Slit Open Length = 1.978 inches  
Open Area = 21.511 square inches