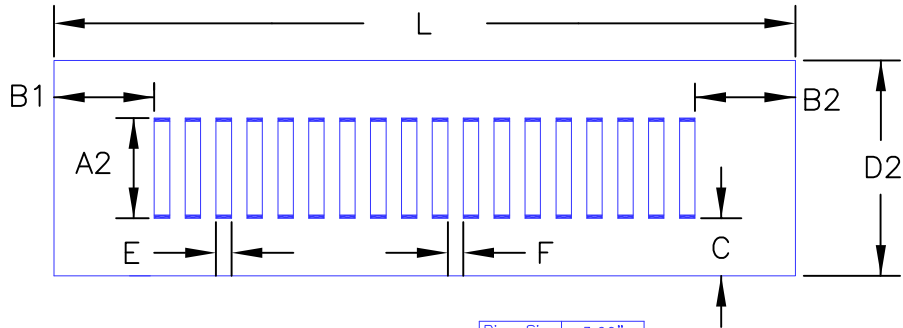
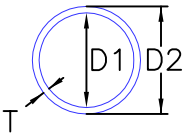


Inline Pipe Grate Component - Schedule 40 PVC  
3" Nominal Pipe Size - Non-Belled

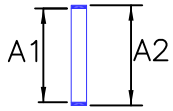
Plan View



Typical Pipe Section

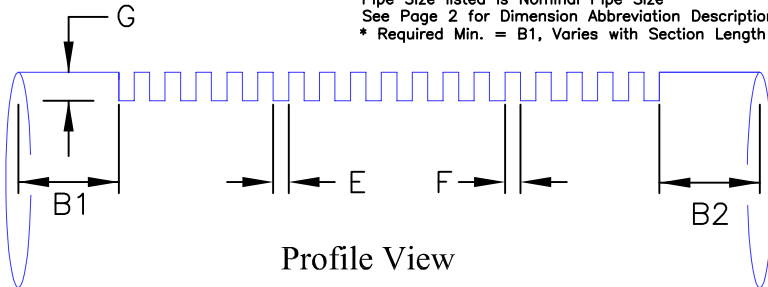


Slit Dimensions



Pipe Size	3.00"
D1	3.068"
D2	3.50"
A1	1.546"
A2	2.375"
B1	1.875"
B2	*
C	0.562"
E	0.250"
F	0.312"
G	0.465"
T	0.216"
Open Area Per Slit	0.39 in <sup>2</sup>

Pipe Size listed is Nominal Pipe Size  
See Page 2 for Dimension Abbreviation Descriptions.  
\* Required Min. = B1, Varies with Section Length



Profile View

Inline Pipe Grate Component - Schedule 40 PVC  
3" Nominal Pipe Size - Non-Belled

- D1 = Nominal Inside Diameter per ASTM D1785
- D2 = Outside Diameter per ASTM D1785
- A1 = Provided Open Slit Length
- A2 = Total Length of Slit Cut
- B1 = Short End Clear Spacing = Min. required for SCH40 fittings
- B2 = Long End Clear Spacing
- C = Clear Spacing from OD to Edge of Slit Cut
- E = Slit Width
- F = Rib Width
- G = Depth of Slit Cut (Slit Height)
- T = Minimum Thickness per ASTM D1785

3" IPGC		
(L) (FT)	# Slits	Open Area (SF)
0.5	4	0.011
1.0	15	0.040
1.5	25	0.067
2.0	36	0.097
2.5	47	0.126
3.0	57	0.153
3.33	65	0.174
3.5	68	0.183
4.0	79	0.212
4.5	89	0.239
5.0	100	0.268
5.5	111	0.298
6.0	121	0.325
6.5	132	0.354
6.67	136	0.365
7.0	143	0.384
7.5	154	0.413
8.0	164	0.440
8.5	175	0.470
9.0	186	0.499
9.5	196	0.526
10.0	207	0.556
10.5	218	0.585
11.0	228	0.612
11.5	239	0.641
12.0	250	0.671
12.5	260	0.698
13.0	271	0.727
13.33	278	0.746
13.5	282	0.757
14.0	292	0.784
14.5	303	0.813
15.0	314	0.843
15.5	324	0.870
16.0	335	0.899
16.5	346	0.929
16.67	349	0.937
17.0	356	0.956
17.5	367	0.985
18.0	378	1.015
18.5	388	1.041
19.0	399	1.071
19.5	410	1.100
20.0	420	1.127

\* The open slit areas shown in the table assume a standard fitting is attached on each end of the pipe section. Thus, some of the listed length (L) is considered unavailable for providing open slits.

For an internal one-foot section of 3" IPGC, beginning at the edge of an open slit:

Number of Open Slits = 21  
Slit Open Width = 0.25 inches  
Slit Open Length = 1.546 inches  
Open Area = 8.406 square inches