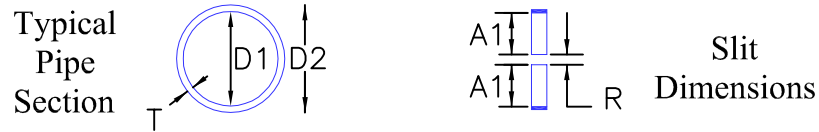
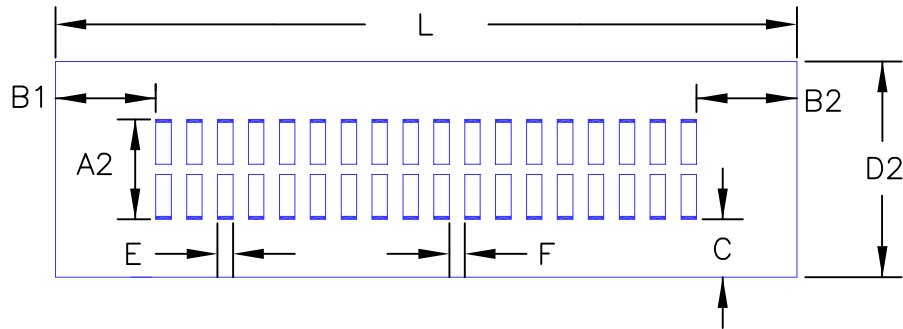


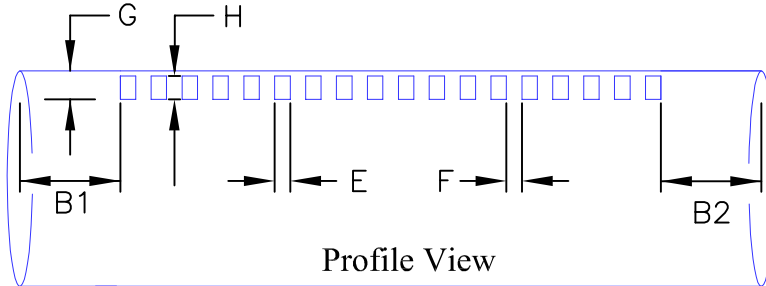
Inline Pipe Grate Component - Schedule 40 PVC
12" Nominal Pipe Size w/ Center Support - Non Belled

Plan View



Pipe Size	A1	A2	B1	B2	C	D1	D2	E	F	G	H	R	T	Open Area Per Slit
12.00"	3.00"	8.00"	6.00"	***	2.375"	11.938"	12.75"	0.250"	0.312"	1.411"	1.024"	0.75"	0.375"	1.66 in ²

Pipe Size listed is nominal pipe size.
*** Required Min. = B1, Varies with Section Length.
See Page 2 for Dimension Abbreviation Descriptions.



Inline Pipe Grate Component - Schedule 40 PVC
12" Nominal Pipe Size w/ Center Support - Non Belled

- D1 = Nominal Inside Diameter per ASTM D1785
- D2 = Outside Diameter per ASTM D1785
- A1 = Provided Open Slit Length
- A2 = Total Length of Slit Cut
- B1 = Short End Clear Spacing = Min. required for SCH40 fittings
- B2 = Long End Clear Spacing
- C = Clear Spacing from OD to Edge of Slit Cut
- E = Slit Width
- F = Rib Width
- G = Depth to Bottom of Open Slit from top of pipe
- H = Slit Height
- T = Minimum Thickness per ASTM D1785

12"-CS IPGC		
(L) (FT)	# Slits	Open Area (SF)
---	---	---
1.5	22	0.115
2.0	42	0.219
2.5	64	0.333
3.0	86	0.448
3.33	100	0.521
3.5	106	0.552
4.0	128	0.667
4.5	150	0.781
5.0	170	0.885
5.5	192	1.000
6.0	214	1.115
6.5	234	1.219
6.67	242	1.260
7.0	256	1.333
7.5	278	1.448
8.0	300	1.563
8.5	320	1.667
9.0	342	1.781
9.5	364	1.896
10.0	384	2.000
10.5	406	2.115
11.0	428	2.229
11.5	448	2.333
12.0	470	2.448
12.5	492	2.563
13.0	512	2.667
13.33	526	2.740
13.5	534	2.781
14.0	556	2.896
14.5	576	3.000
15.0	598	3.115
15.5	620	3.229
16.0	640	3.333
16.5	662	3.448
16.67	670	3.490
17.0	684	3.563
17.5	704	3.667
18.0	726	3.781
18.5	748	3.896
19.0	768	4.000
19.5	790	4.115
20.0	812	4.229

* The open slit areas shown in the table assume a standard fitting is attached on each end of the pipe section. Thus, some of the listed length (L) is considered unavailable for providing open slits.

For an internal one-foot section of 12"-CS IPGC, beginning at the edge of an open slit:

Number of Open Slits = 42 (21 open slits X 2 sides)
Slit Open Width = 0.25 inches
Slit Open Length = 3,000 inches
Open Area = 32.625 square inches